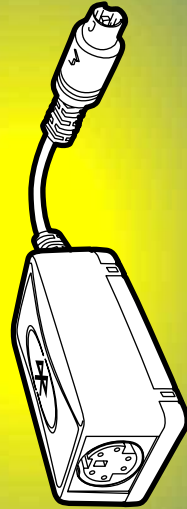


Bluetooth Box for GPS Receiver

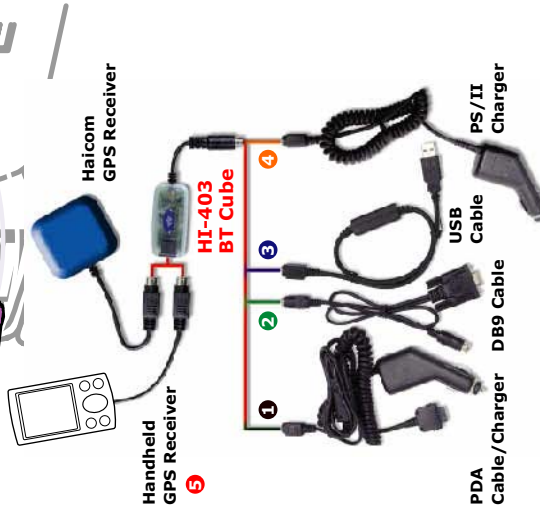
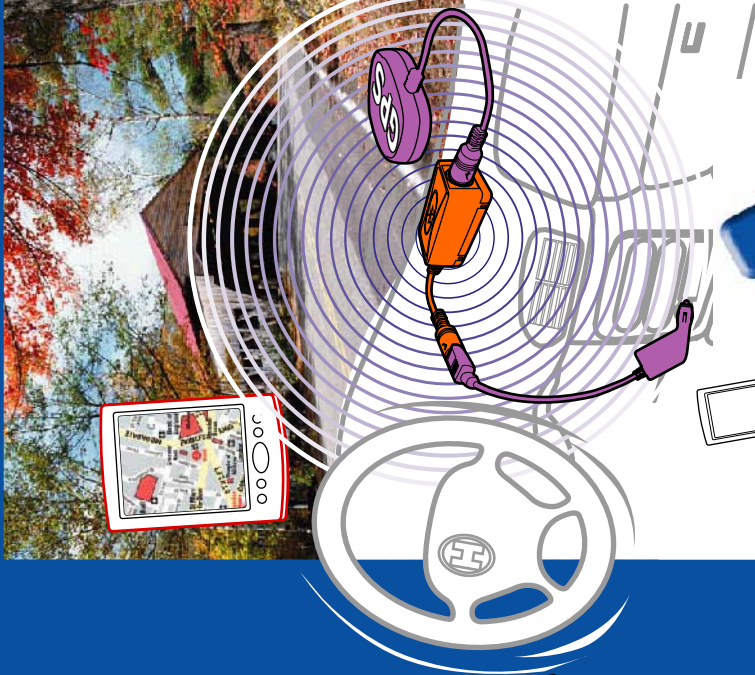
HI-403
BT Cube



**Bluetooth Box
for GPS Receiver**



User Manual



- Optional Accessories:**
- | Model# | Model# |
|--------------------------------------|----------|
| 1 PS/II to PDA cable Charger | CHG-XXXX |
| 2 PS/II to DB9 serial cable | CAB-PS2 |
| 3 PS/II to USB cable | CAB-USB |
| 4 PS/II to AC cigarrret lighter | CHG-PS2 |
| 5 PS/II (Male) to handheld GPS cable | CAB-XXXX |

HI-403 BT Cube

HI-403 BT Cube is a small box contains Class 2 Bluetooth module. One end of the cube is a 6 pin Mini-DIN PS/II female connector for connecting to the power source DC 12V car charger while the other end is a 6 pin Mini-DIN PS/II male connector for connecting to the PS/II GPS receiver.

Please consult the enclosed step by step Bluetooth connection set up procedure guides.

Specifications:

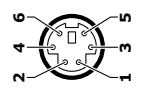
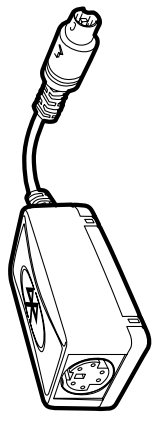
Bluetooth V1.1 Compliances

Frequency Range :	2.4 ~ 2.4835 GHz unlicensed ISM band
Interface :	USB / UART / SPI
Receiver Sensitivity :	-80 dBm @ 0.1% BER
Transmitting Power :	Class 2 -6 dBm ~ +4 dBm
RF Input Impedance :	50 ohms
Frequency Hopping :	1600hops/sec.
Baseband Crystal OSC :	16MHz
Data Rate :	Up to 723kb/s
Operating Temperature :	-30°C ~ +90°C
Transmitting Range :	10 meters (Typical)
Power Consumption :	45 mA (Typical)

LED indicator:

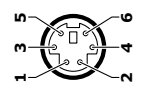
Blinking: Searching host device
Stay On: Bluetooth connected

Pin Assignment:



6 Pin PS/2 Female

Color	Function	CN1
Green	RX To BT (From GPS)	5
White	TX To GPS (From BT)	4
Red	VCC	2
Black	GND	1



6 Pin PS/2 Male

Color	Function	CN1
Green	TX	5
White	RX	4
Red	VCC	2
Black	GND	1

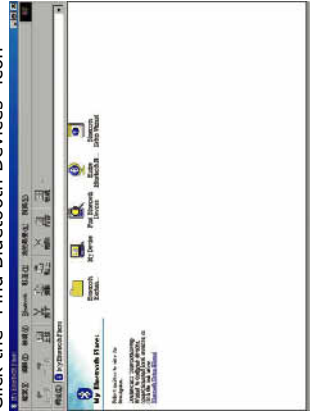
* The specifications are subject to changed without notice
* All the names and trademarks are belonging to their respective companies.

Get Connected; Installation Guide

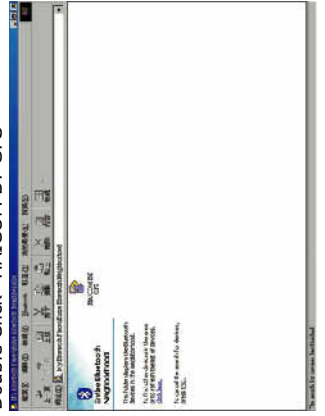


Notebook Installations

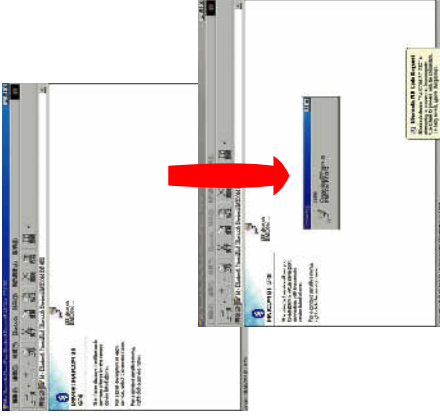
- 1 Run "My Bluetooth Places" and Double Click the "Find Bluetooth Devices" icon



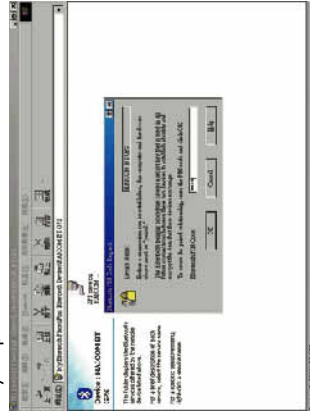
- 2 Double Click "HAICOM BT GPS"



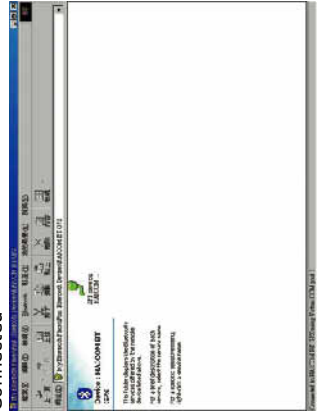
- 3 Double Click "SPP on HAICOM BT GPS"



- 4 Key in pin code: 0000



- 5 Connected

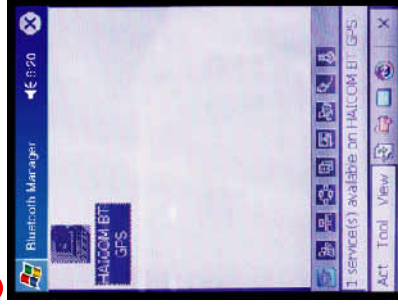


PDA Installations

- 1 Double Click the Bluetooth icon



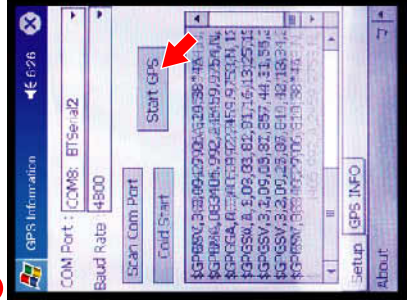
- 3 Found the host device



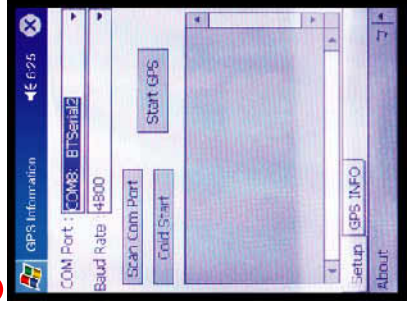
- 2 Double Click "HAICOM BT GPS"



- 6 Start GPS, NMEA message inflow



- 5 Select the correct com port



- 7 More satellites info

